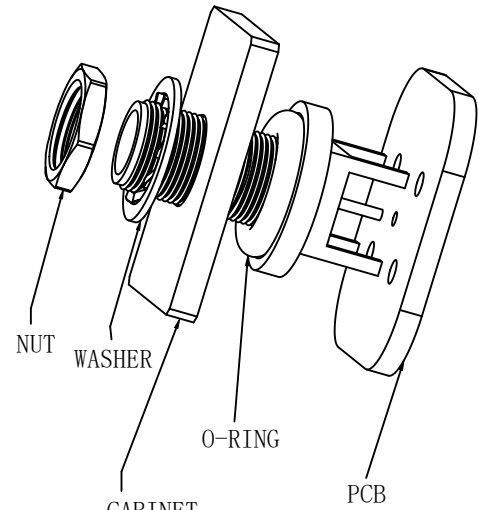
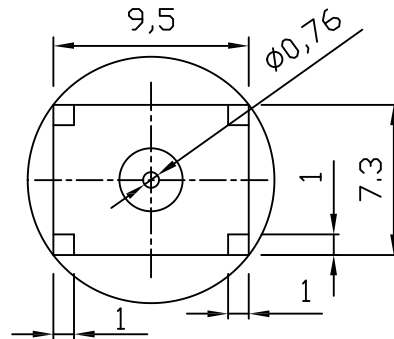
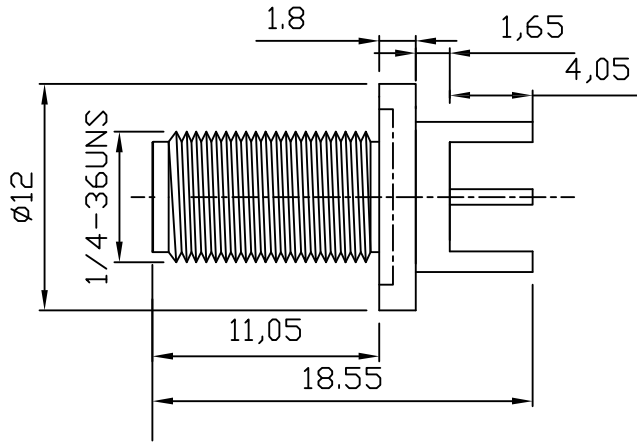
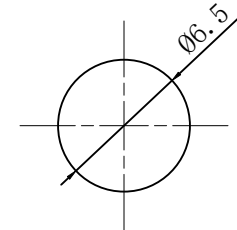
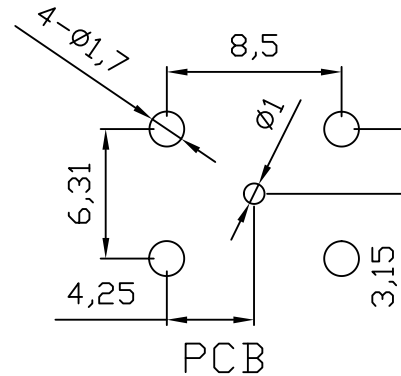
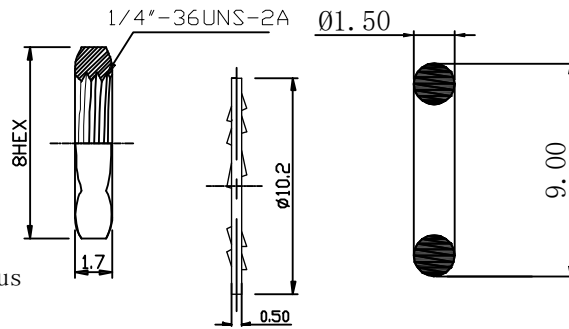




REV	DESCRIPTION	DWN	DATE	APPROVEN
A	First issue	SAM	2016/10/07	JIM.KING
B	Add the assembly schematic diagram	Li	2026/01/30	Jason



CABINET PLATE
Assembly drawing



Recommended hole opening size
(chassis board thickness: 1.2 ~ 3.0 mm)

Specifications:

IMPEDANCE: 50 Ohms
 Frequency range: 0~6GHZ
 VSWR: 1.5MAX
 Voltage Rating: 335 Volts RMS Continuous
 Dielectric withstand voltage: 1000 V
 Service life: ≥500
 Insulation Resistance ≥5000MΩ
 Center contact resistance: ≤3mΩ
 Outer contact resistance: ≤2mΩ
 Operation Temperature: -55°C ~ +165°C
 Waterproof Range: IP67, Mated

NO	DESCRIPTION	MATERIAL	FINISH	QTY
6	O-Ring	The Silicone	RED	1
5	Nut	BRASS	GOLD	1
4	Washer	BRASS	GOLD	1
3	Center contact	BRASS	GOLD	1
2	INSULATOR	TEFLON	WHITE	1
1	BODY	BRASS	GOLD	1

-TOLERANCES- UNLESS OTHERWISE SPECIFIED	RENHOTEC GROUP				
	PART DESCRIPTION: SMA JACK EDGE MOUNT CONNECTOR				
UNLESS OTHERWISE SPECIFIED TOLERANCES FOR MILLIMETERS ARE: 0.5 - 8mm ± 0.15mm 8 - 30mm ± 0.20mm 30 - 120mm ± 0.30mm	Appr:	P/N: RHT-612-0326			
	Check: Jason	Date	Scale	Unit	Type
	Draw: Li	2026.01.30	Free	MM	Z